

UNO Touch Screen Setting Note

Introduction

This document introduces how to enable/disable touch screen function.

NOTE

UNO support the touch screen function of FPM-3120/VOP-1150TV

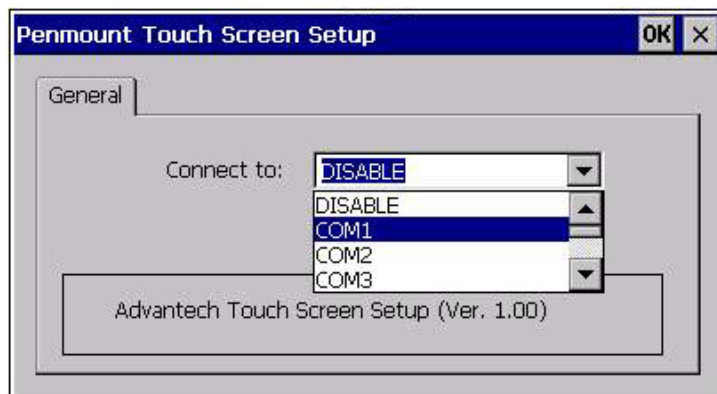
How to enable/disable touch screen function

1. Please connect the UNO and PC by ActiveSync and copy the “Touch Screen” application from below path: (Further information about ActiveSync; please refer to “ActiveSync User Guide”)

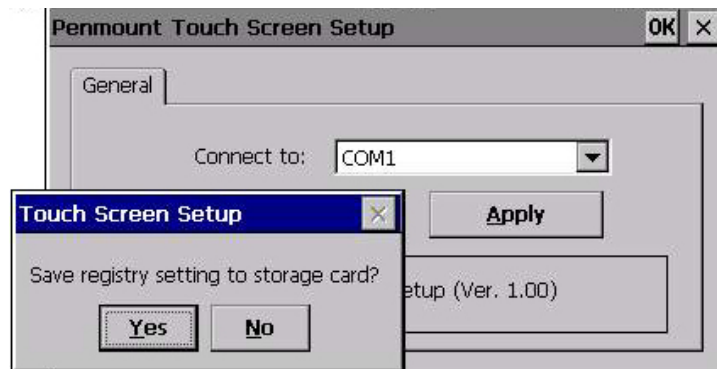
<\\Windows CE\CE .NET 4.1\Application\dmctouch.cpl>

You may copy “dmctouch.cpl” from the CD-ROM of PC to UNO by ActiveSync; suggest you may copy dmctouch.cpl to “Harddisk” folder in UNO.

2. Select “Start”→”Programs”→”Windows Explorer”; select “View”→”Option” and choose “Show all files”.
3. Execute “dmctouch.cpl”; and the dialog window will be showed below:



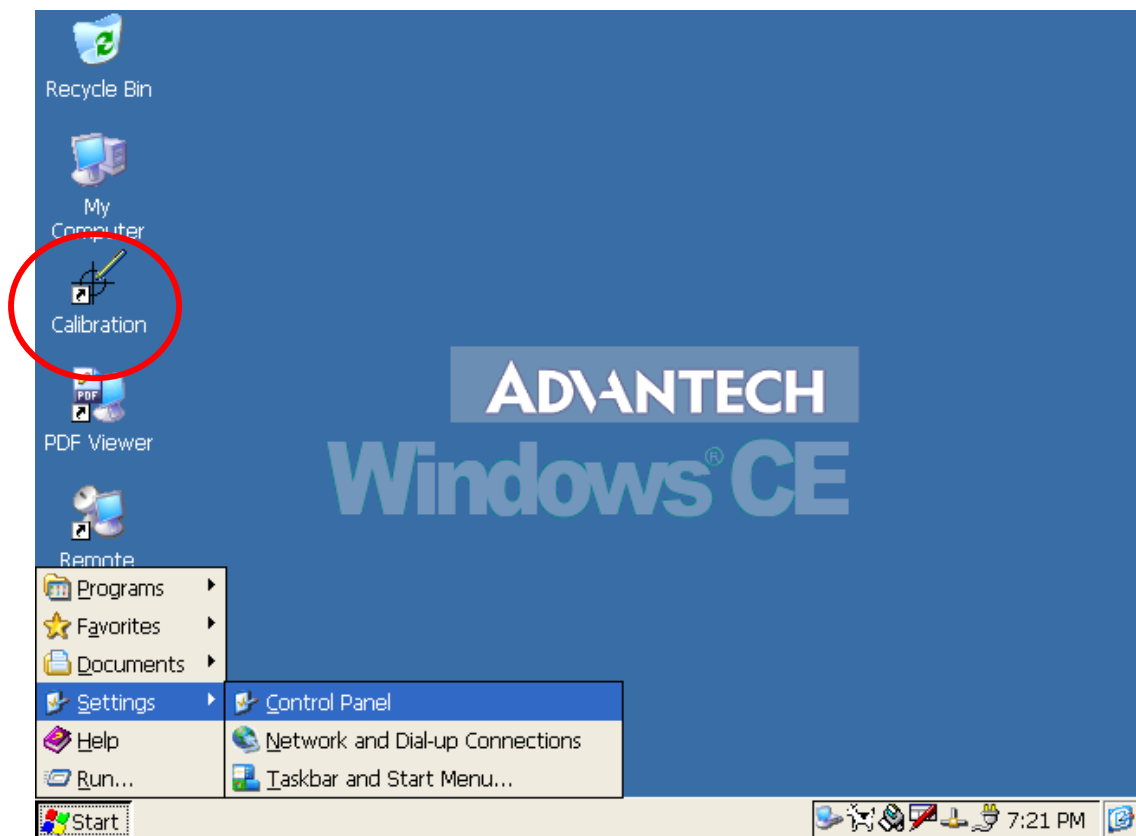
4. Click the down arrow of the right of the **“Connect to”** field and you can enable or disable touch screen function. Note that touch screen function will occupy one COM port; therefore, If you want to enable touch screen function, you have to select a COM port for touch screen used.
5. Click the **Apply** button, and it will pop up a dialog window. If you confirm your touch screen setting, press **Yes** button. Otherwise, press **No** button to abort it.



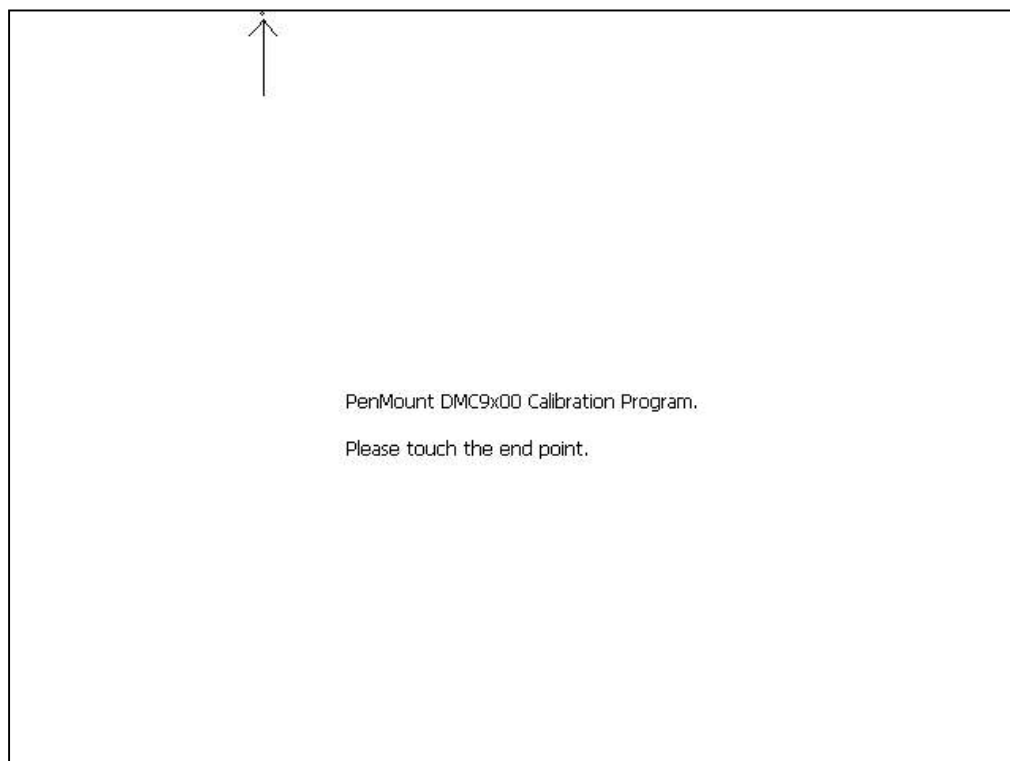
6. If you press **Yes** button in the dialog window, then it will pop up a message window as below. Press **OK** button to finish touch screen function setting.



7. Click Calibration in the desktop.



8. Touch the end point on the screen to calibrate touch screen function.



9. Press start of task bar of window system and select “**Run**” to execute **regsave**. It will save the settings in the storage device.



10. Restart UNO, then it will apply new touch screen settings that you set.